

**MAXIMISE YOUR OPTIONS.
MINIMISE YOUR RISK.**

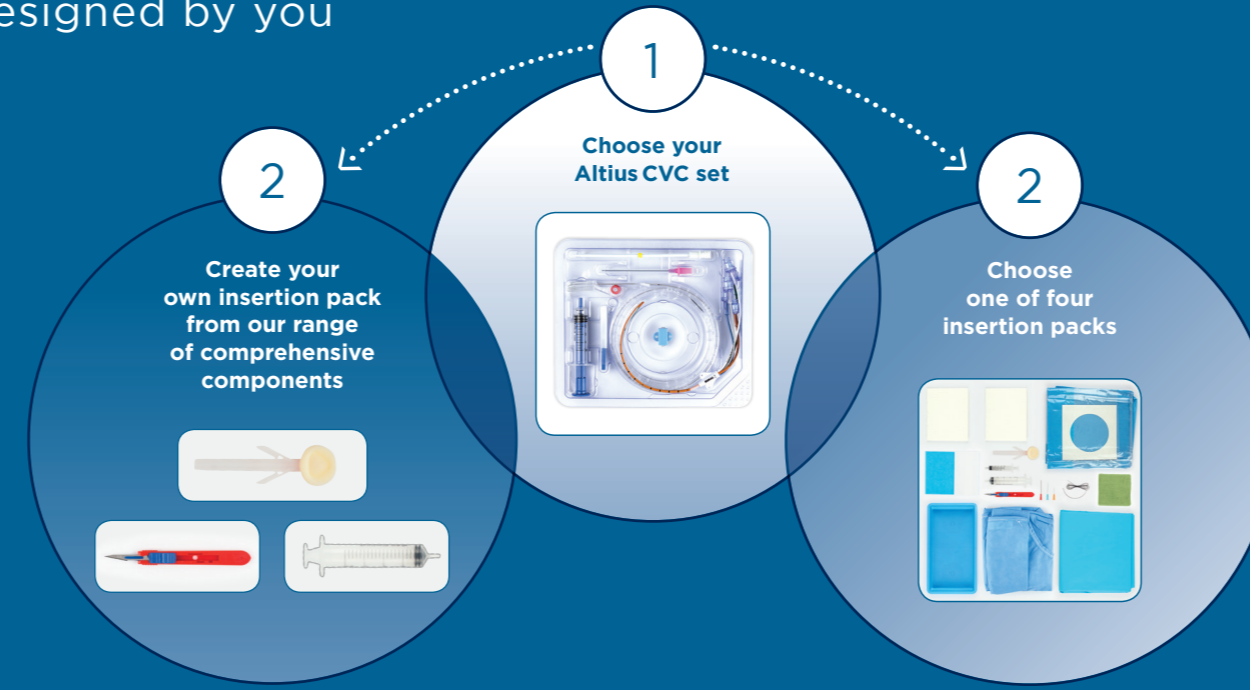


Now with Altius CVCs
you don't need to compromise
between patient safety and drug
delivery performance.

Maximise your options whilst minimising the risks to your patients with all the unique features of the Altius family of catheters.

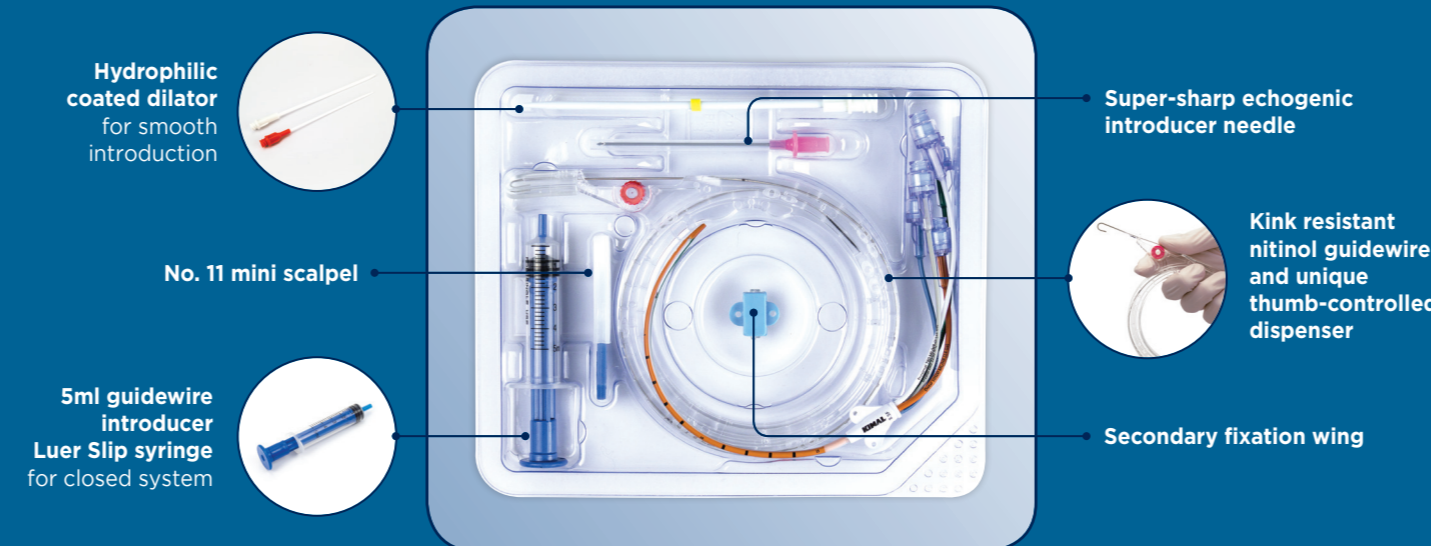
Altius CVC Procedure Packs

Designed by you



Altius CVC Insertion Kits

Providing a safe insertion



For more information and pricing speak to your local Kimal Representative or contact:

UK
Tel: +44 (0)845 437 9542
Fax: +44 (0)845 437 9544
Email: customercare@kimal.co.uk

Germany
Tel: +49 (0)2133 285 141
Fax: +49 (0)2133 285 1420
Email: info@kimal.de

International
Tel: +44 (0)845 437 9543
Fax: +44 (0)845 437 9544
Email: internationalenquiries@kimal.co.uk

Middle East
Tel: +97 16 552 8146
Fax: +97 16 552 8147
Email: mea@kimal.co.uk

www.kimal.com

KIMAL
delivering healthcare innovation

© 2016 Kimal PLC. All rights reserved. No part of this document may be reproduced in any form or by any means without permission in writing from Kimal PLC. Kimal PLC reserve the right to change the specification of its products at any time. Kimal PLC, Arundel Road, Uxbridge, UB8 2SA.

L-0155-0071-A5



ALTIUS[®]
CVC

CENTRAL VENOUS CATHETERS

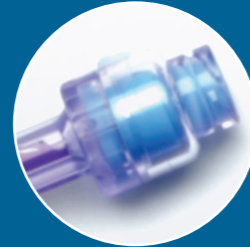
DON'T COMPROMISE. MAXIMIZE.

KIMAL
delivering healthcare innovation

INNOVATION FROM ALTIUS

LuerSafe® Automatic Clamps

Integrated, split-septum connector to reduce the risk of infection and air embolism.



Colour-Coded Lumens

Clearer identification of the lumen reduces the potential risk of misconnections.



Multi-Tube™ Technology

Unique catheter design allows for multiple lumens without any compromise to flow or catheter size.



High Pressure Line

Incorporated to allow for high pressure contrast media infusions at 300psi with a flow of 10ml/sec.

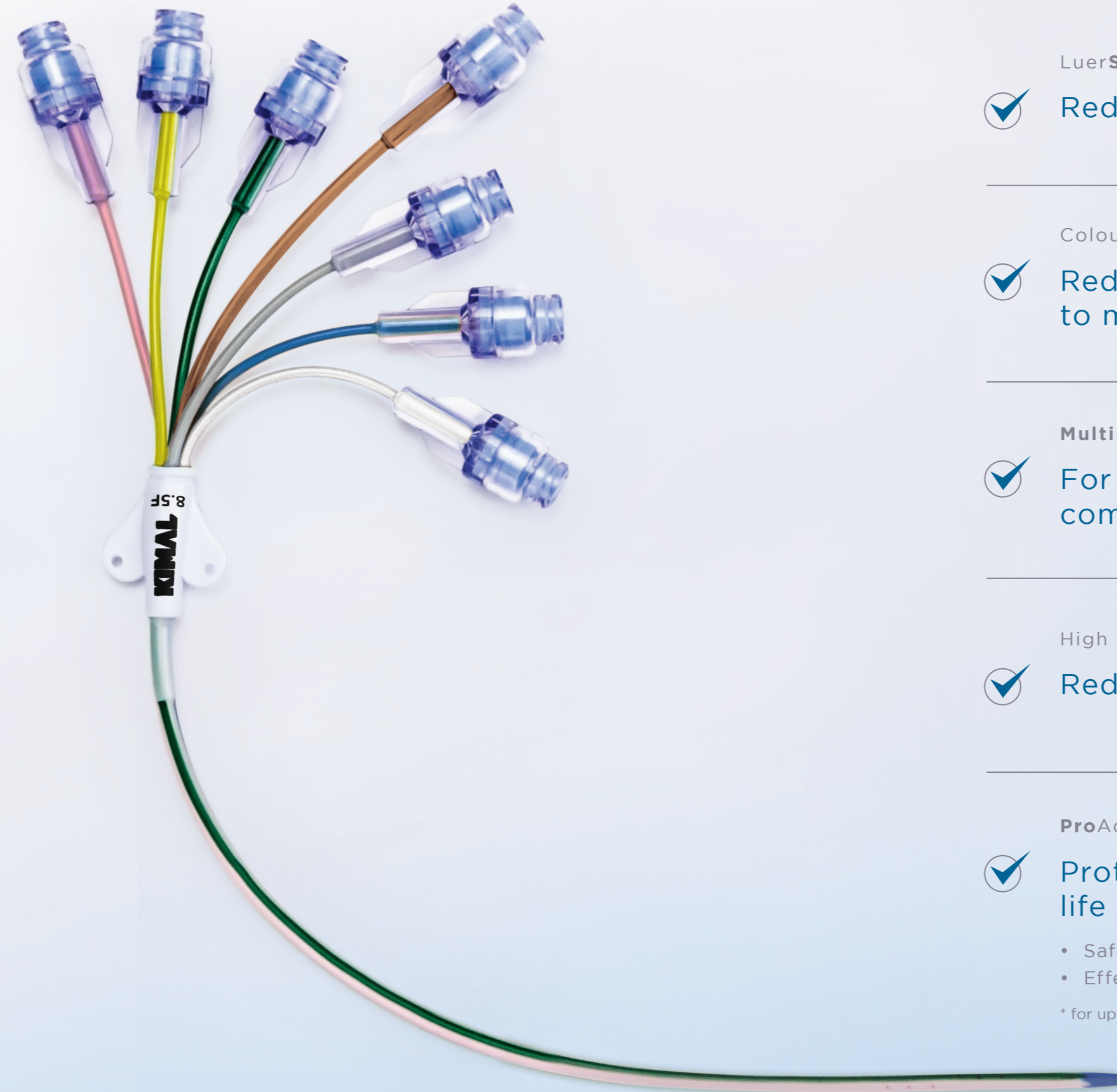


ProActiv+™ Advanced PHMB Polyhexanide Antimicrobial Bonding

• Broad spectrum of activity • Biocompatible • Non-eluting covalent bonding



MAXIMISE YOUR OPTIONS.



MINIMISE YOUR RISK.



LuerSafe Automatic Clamps

- ✓ Reduces the risk of infection and air embolism

Colour-Coded Lumens

- ✓ Reduce the risk of maladministration due to misidentification of the lines

Multi-Tube™ Technology

- ✓ For superior flow rates and no compromise in French size

High Pressure Line

- ✓ Reduces the need for secondary interventions

ProActiv+ Advanced PHMB Antimicrobial Bonding

- ✓ Protecting the patient for the life of the catheter*

- Safe to use in all your patients
- Effective against gram positive, gram negative and fungi

* for up to 30 days