

www.iskushealth.com

## FOR CENTRAL LINE INSERTION

Remove Compass UniversalHg from its sterile package.

Activate and calibrate Compass UniversalHg by depressing the blue power button for approximately one second until the display reads "00 mm" (Figure 1).

**Warning: Activate and calibrate Compass UniversalHg prior to attaching to accessories to avoid incorrect baseline pressure.**

Remove the proximal luer cap (Figure 2). Removing this cap prior to calibration does not affect the reading.

Attach introducer needle and syringe to Compass UniversalHg (Figure 3).

Insert the introducer needle into the central vein or other vessel.

Verify vessel access using pressure reading. Pressure is displayed on Compass UniversalHg LCD (Figure 4).

Insert guidewire (up to 0.038" diameter) through Compass UniversalHg guidewire port and into vessel (Figure 5). Smaller guidewires may necessitate the use of the guidewire insertion tool accompanying the guidewire holder.

Alternate Technique: Remove syringe and insert guidewire through the syringe port on Compass UniversalHg.

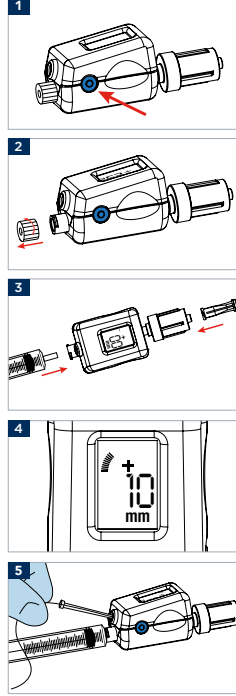
Hold guidewire in place and remove introducer needle and Compass UniversalHg assembly.

Perform catheter insertion per catheter manufacturer's instructions.

### Device Power Off and Recalibration

Press button three times in a "PUSH – PUSH – HOLD" sequence (i.e. quickly push button twice and then hold the third button push until device turns off). To recalibrate and zero the device, open the device to atmosphere and depress power button until display reads "00 mm".

For complete instructions and warnings, consult the IFU supplied with the device.



## CVP FOR SEPSIS MANAGEMENT

Remove Compass UniversalHg from its sterile package.

Activate and calibrate Compass UniversalHg by depressing power button for approximately one second until display reads "00 mm" (Figure 1).

**Warning: Activate and calibrate Compass UniversalHg prior to attaching to accessories to avoid incorrect baseline pressure.**

Remove the proximal luer cap. Removing this cap prior to calibration does not affect the reading. Prime Compass UniversalHg with saline and attach Compass UniversalHg to distal hub of central venous catheter (Figure 2).

Position Compass UniversalHg at midaxillary line or phlebostatic axis, depending on the inclination of the patient, then measure central venous pressure. Pressure is displayed on Compass UniversalHg LCD (Figure 3).

If extension tubing (sold separately) is needed to reach phlebostatic axis, attach Compass UniversalHg to extension tubing, then prime prior to attaching to distal hub of central venous catheter.

For continuous or intermittent pressure reading, the female luer lock port of Compass UniversalHg can be capped with a sterile needle-less valve connector or sterile cap.

Note: If Compass UniversalHg is capped, flush to ensure patency before CVP measurement.

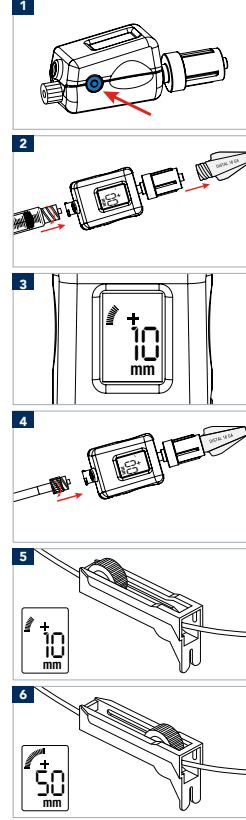
For intermittent CVP reading with fluid infusion, the female luer lock port of Compass UniversalHg can be connected to fluid infusion tubing (Figure 4). When pressure reading is needed, close roller clamp (slide or other style clamp) prior to taking reading (Figure 5).

Note: When roller clamp is open during fluid infusion, the Compass UniversalHg will report the pressure of the infusion fluid, NOT the central venous pressure (Figure 6).

### Device Power Off and Recalibration

Press button three times in a "PUSH – PUSH – HOLD" sequence (i.e. quickly push button twice and then hold the third button push until device turns off). To recalibrate and zero the device, open the device to atmosphere and depress power button until display reads "00 mm".

For complete instructions and warnings, consult the IFU supplied with the device.



IS503a1v1\_Compass CVP for Sepsis Management 1108-16  
Compass® is a registered trademark of Mirador Biomedical, Inc. (a subsidiary of Centurion Medical Products Corporation).  
Centurion® is a registered trademark of Centurion Medical Products Corporation.  
©2016 Centurion Medical Products Corporation. All rights reserved.

## FOR INTRA-ABDOMINAL PRESSURE

Activate and calibrate Compass UniversalHg by depressing the blue power button for approximately one second until the display reads "00 mm" (Figure 1).

**Warning: Activate and calibrate Compass UniversalHg prior to attaching to accessories to avoid incorrect baseline pressure.**

Remove the proximal luer cap (Figure 1). Removing this cap prior to calibration does not affect the reading.

Prime Compass and accessories prior to attaching to sampling port of the Foley catheter (Figure 2).

Connect Compass directly to the female, luer lock sampling port of the Foley catheter (Figure 3A). Note: a short (~10-20") extension tube can be connected to the sampling port and the male, luer lock connection of Compass UniversalHg (Figure 3B) to facilitate positioning of the Compass device at the mid-axillary line (level of urinary bladder).

### Pressure Measurement

Confirm Compass UniversalHg is positioned at the mid-axillary line (level of the urinary bladder). For patients in an inclined position, place Compass at the iliac crest at the mid-axillary line.

Clamp the tubing that leads to the collection device with a slide clamp, rubber band, or hemostat. (Figure 3A or 3B).

Infuse ~20cc saline for adults or quantity per hospital protocol, within 10 seconds. Infusion can be directly into Compass UniversalHg or through a needleless valve positioned at the female luer lock port of Compass UniversalHg (Figure 3A or 3B).

Allow system to equilibrate (a few seconds) prior to reading pressure.

Verify intra-abdominal pressure from the pressure data displayed on Compass UniversalHg LCD (Figure 4).

Record any infused saline in the patient chart to adjust urine output.

When measurement is completed, unclamp the drainage tube.

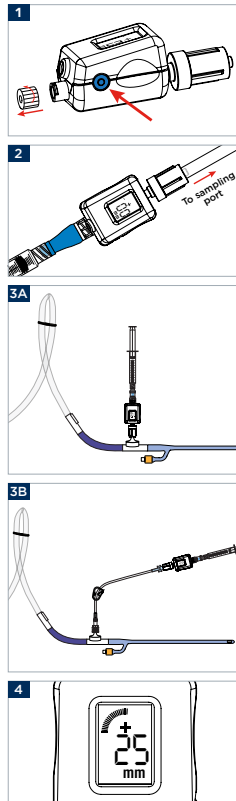
Disconnect the syringe and cap Compass UniversalHg with a sterile dead end cap or needleless valve if the needleless valve isn't already present.

Repeat process for subsequent measurements.

### Device Power Off and Recalibration

Press button three times in a "PUSH – PUSH – HOLD" sequence (i.e. quickly push button twice and then hold the third button push until device turns off). To recalibrate and zero the device, open the device to atmosphere and depress power button until display reads "00 mm".

For complete instructions and warnings, consult the IFU supplied with the device.



## FOR COMPARTMENT PRESSURE

Remove Compass UniversalHg from its sterile package.

Remove the proximal luer cap and connect Compass UniversalHg to 18G needle and saline filled syringe (Figure 1).

Prime Compass UniversalHg and needle with syringe.

With Compass UniversalHg and needle positioned at the angle of insertion (Figure 2) activate and calibrate Compass UniversalHg by depressing the blue power button for approximately one second until the display reads "00 mm" (Figure 3).

Insert needle tip (Figure 4) and inject 0.3 cc of saline to clear any tissue from the needle tip.

Pressure is displayed on Compass UniversalHg LCD (Figure 5).

Additional compartment measurements can be obtained during the same procedure on the same patient.

### Device Power Off and Recalibration

Press button three times in a "PUSH – PUSH – HOLD" sequence (i.e. quickly push button twice and then hold the third button push until device turns off). To recalibrate the device, depress the power button with accessories assembled to the device and positioned at the angle of insertion until display reads "00 mm".

For complete instructions and warnings, consult the IFU supplied with the device.

