

MAXIMISE YOUR OPTIONS.  
MINIMISE YOUR RISK.

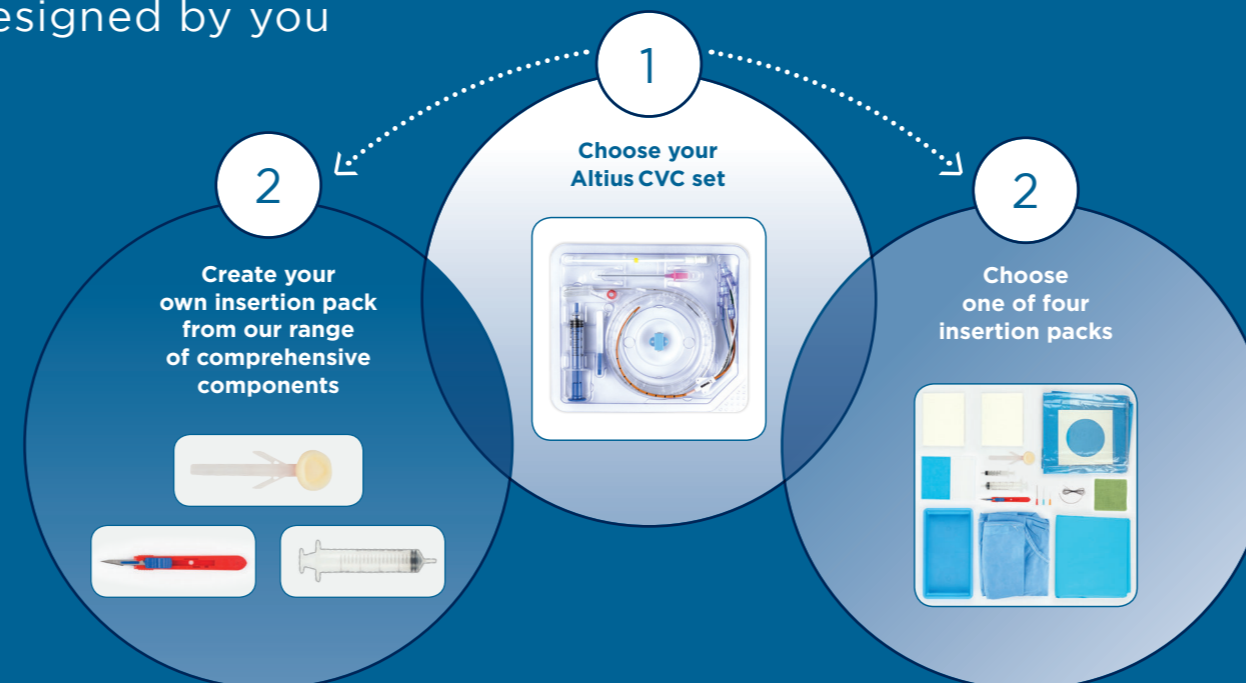


Now with Altius CVCs  
you don't need to compromise  
between patient safety and drug  
delivery performance.

Maximise your options whilst minimising the risks to your  
patients with all the unique features of the Altius family of  
catheters.

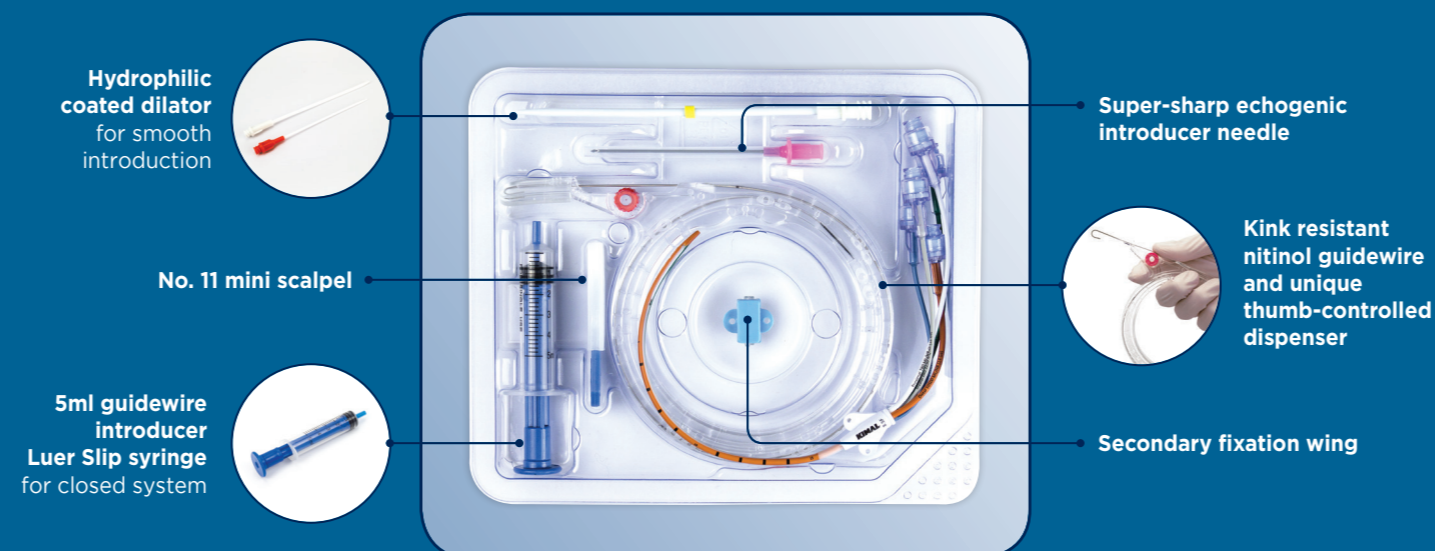
## Altius CVC Procedure Packs

Designed by you



## Altius CVC Insertion Kits

Providing a safe insertion



For more information and pricing contact:

Iskus Health Ltd  
Ireland  
Tel: +353 (0) 1 428 7895 Email: [info@iskushealth.com](mailto:info@iskushealth.com)  
[www.iskushealth.com](http://www.iskushealth.com)

[www.kimal.com](http://www.kimal.com)

**KIMAL**  
delivering healthcare innovation

© 2016 Kimal PLC. All rights reserved. No part of this document may be reproduced in any form or by any means without permission in writing from Kimal PLC. Kimal PLC reserve the right to change the specification of its products at any time. Kimal PLC, Arundel Road, Uxbridge, UB8 2SA.

L-0155-0071-A5

**ISKUSHEALTH**  
IMPROVING PATIENT OUTCOMES

**ALTIUS**®  
CVC

**CENTRAL VENOUS CATHETERS**

DON'T COMPROMISE. MAXIMIZE.

**KIMAL**  
delivering healthcare innovation



## INNOVATION FROM ALTIUS

### LuerSafe® Automatic Clamps

Integrated, split-septum connector to reduce the risk of infection and air embolism.



### Colour-Coded Lumens

Clearer identification of the lumen reduces the potential risk of misconnections.



### Multi-Tube™ Technology

Unique catheter design allows for multiple lumens without any compromise to flow or catheter size.



### High Pressure Line

Incorporated to allow for high pressure contrast media infusions at 300psi with a flow of 10ml/sec.

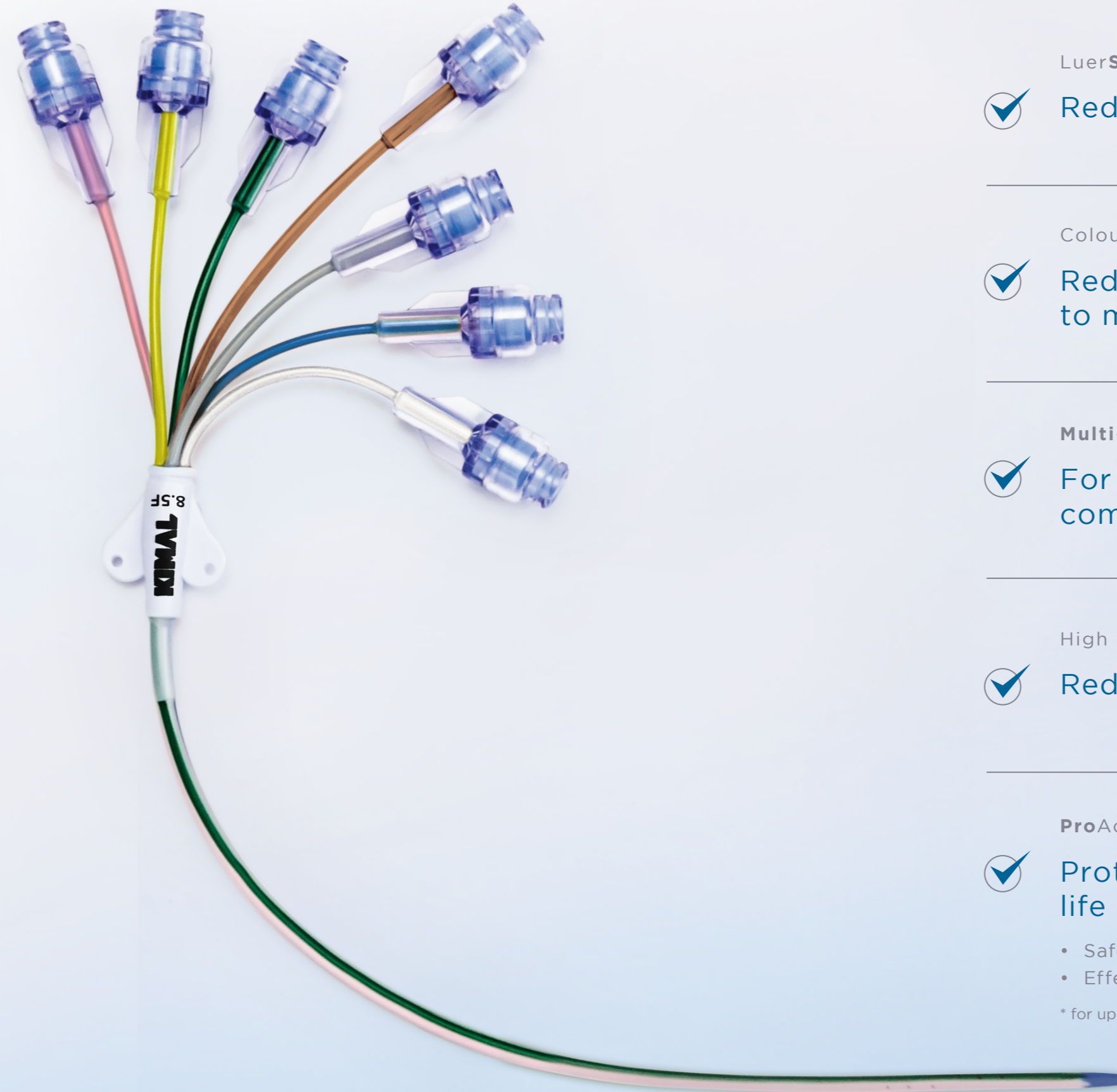


### ProActiv+™ Advanced PHMB Polyhexanide Antimicrobial Bonding

• Broad spectrum of activity • Biocompatible • Non-eluting covalent bonding



## MAXIMISE YOUR OPTIONS.



## MINIMISE YOUR RISK.



LuerSafe Automatic Clamps

- ✓ Reduces the risk of infection and air embolism

Colour-Coded Lumens

- ✓ Reduce the risk of maladministration due to misidentification of the lines

Multi-Tube™ Technology

- ✓ For superior flow rates and no compromise in French size

High Pressure Line

- ✓ Reduces the need for secondary interventions

ProActiv+ Advanced PHMB Antimicrobial Bonding

- ✓ Protecting the patient for the life of the catheter\*

- Safe to use in all your patients
- Effective against gram positive, gram negative and fungi

\* for up to 30 days