

Obtain top-quality tissue samples with ease and efficiency

BD soft tissue biopsy needles



Achieve™
biopsy device



Pink Achieve™
biopsy device

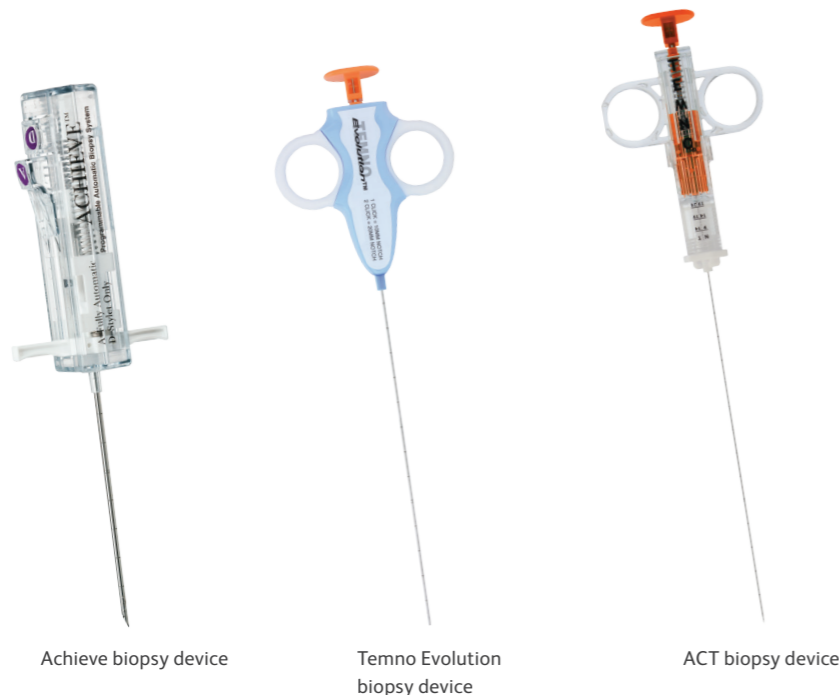


Temno Evolution™
biopsy device



Adjustable coaxial
Temno™ (ACT)
biopsy device

BD offers a wide range of reliable soft tissue biopsy needles for precise samples every time. Our proven brands, such as Achieve, Temno and Tru-Cut™, offer a complete selection with advanced features to obtain top-quality tissue samples with ease and efficiency.



These BD devices can be used for soft tissue biopsy procedures, such as:

Breast	Kidney	Liver
Lung	Prostate	Thyroid

The needles in this catalog are not intended for use in bone.



All of our devices are available in a wide range of gauge sizes and lengths to meet your procedural requirements.

Automated

Achieve biopsy device 1
 Pink Achieve biopsy device 1

Semiautomated

Temno Evolution biopsy device 3
 Adjustable coaxial Temno (ACT) biopsy device 4
 Temno biopsy device 5

Coaxial introducer needles

Universal coaxial introducer needles 6

Fine needle aspiration (FNA)

Chiba FNA 7
 Franseen FNA 7

Manual

Jamshidi™ Menghini biopsy device 8
 Tru-Cut biopsy device 8

Achieve biopsy device

The lightweight, automated Achieve device offers spring-loaded action for fast, accurate penetration and the precise control and quality sampling capability you need. The Pink Achieve device is available in 14 and 12 G sizes for optimal control in breast biopsies.

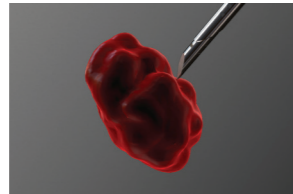
- One-handed design for convenient manipulation of an ultrasound transducer
- Echogenic markings on the cannula and stylet to support precise ultrasound positioning
- Optional coaxial introducer for multiple sampling
- 20 mm sample notch



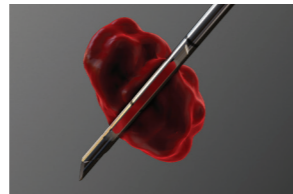
The Achieve biopsy device offers three firing modes for procedural flexibility

1. Automatic mode

Automatic mode releases the cannula and stylet in rapid sequence, and captures a tissue sample with one push of a button.



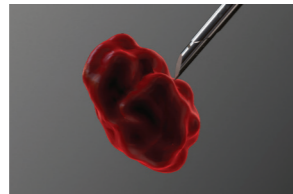
Pre-biopsy (fully charged)



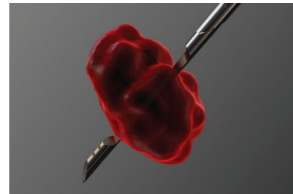
Sample captured (Press button A.)

2. Delay mode

Delay mode allows the clinician to verify the position of the sample notch in the target area before activating the cutting cannula.



Pre-biopsy (fully charged)



Needle position confirmation within lesion (Press button D.)



Sample captured (Press button A.)

3. Zero-throw mode

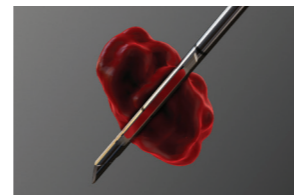
Zero-throw mode offers precision with no forward throw of the needle, reducing the threat of damage to deeper tissue.



Manual needle placement through lesion (uncharged)



Cannula retracts exposing sample notch (charged once)



Sample captured (Press button A.)

Achieve biopsy needles only		
	Cat. no.	Needle size
20 G	A206	20 G x 6 cm
	A209	20 G x 9 cm
	A2011	20 G x 11 cm
	A2015	20 G x 15 cm
	A2020	20 G x 20 cm
18 G	A186	18 G x 6 cm
	A189	18 G x 9 cm
	A1811	18 G x 11 cm
	A1815	18 G x 15 cm
	A1820	18 G x 20 cm
	A1825	18 G x 25 cm
16 G	A166	16 G x 6 cm
	A169	16 G x 9 cm
	A1611	16 G x 11 cm
	A1615	16 G x 15 cm
	A1620	16 G x 20 cm
14 G	A146	14 G x 6 cm
	A149	14 G x 9 cm
	A1411	14 G x 11 cm
	A1415	14 G x 15 cm
	A1420	14 G x 20 cm

For single use only. Five devices per case.

Pink Achieve biopsy needles only		
	Cat. no.	Needle size
12 G	BA129	12 G x 9 cm
	BA1211	12 G x 11 cm
	BA1215	12 G x 15 cm
14 G	BA149	14 G x 9 cm
	BA1411	14 G x 11 cm

For single use only. Five devices per case.

Achieve coaxial biopsy systems			
	Cat. no.	Biopsy needle size	Introducer needle size
20 G	CA2011	20 G x 11 cm	19 G x 6 cm
	CA2015	20 G x 15 cm	19 G x 10 cm
	CA2020	20 G x 20 cm	19 G x 15 cm
18 G	CA1811	18 G x 11 cm	17 G x 6 cm
	CA1815	18 G x 15 cm	17 G x 10 cm
	CA1820	18 G x 20 cm	17 G x 15 cm
16 G	CA1611	16 G x 11 cm	15 G x 6 cm
	CA1615	16 G x 15 cm	15 G x 10 cm
	CA1620	16 G x 20 cm	15 G x 15 cm
14 G	CA1411	14 G x 11 cm	13.5 G x 6 cm
	CA1415	14 G x 15 cm	13.5 G x 10 cm
	CA1420	14 G x 20 cm	13.5 G x 15 cm

For single use only. Five devices per case.

Pink Achieve coaxial biopsy systems			
	Cat. no.	Biopsy needle size	Introducer needle size
12 G	BCA1211	12 G x 11 cm	10 G x 6 cm
	BCA1215	12 G x 15 cm	10 G x 10 cm
14 G	BCA1411	14 G x 11 cm	13.5 G x 6 cm

For single use only. Five devices per case.

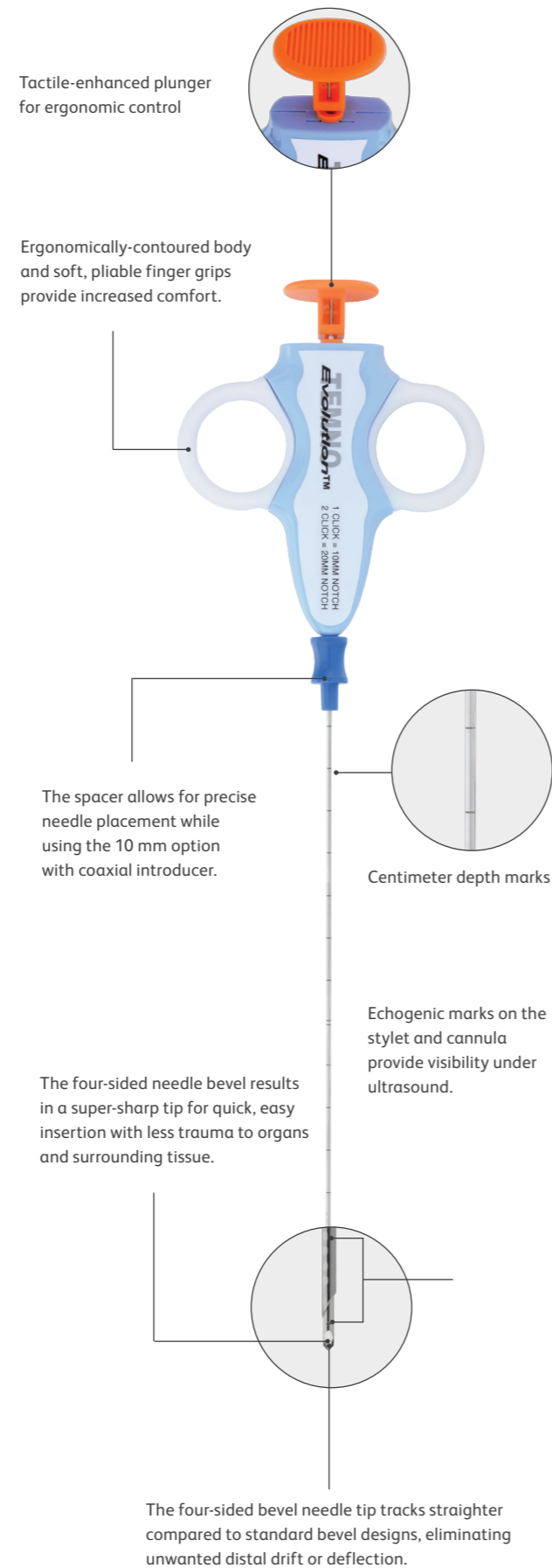
Temno Evolution biopsy device

Temno Evolution biopsy devices offer many of the same features that made our original Temno biopsy needle a leading seller, while setting the standard for procedural flexibility and performance. They are available with or without a coaxial introducer needle.

- The four-bevel tip is significantly sharp for quick, easy penetration.
- The compact, lightweight design allows one-handed operation and can help reduce tissue shear.
- Two notch sizes—10 or 20 mm—provide controlled, precise sampling for a variety of procedural situations.
- A short needle tip minimizes the risk of perforating surrounding organs and vessels.

Temno Evolution	Biopsy needle cat. no.	Biopsy needle size	Biopsy needle with introducer cat. no.	Introducer needle size
20 G ●	TT206	20 G x 6 cm	–	–
	TT2011	20 G x 11 cm	CTT2011	19 G x 6 cm
	TT2015	20 G x 15 cm	CTT2015	19 G x 10 cm
	TT2020	20 G x 20 cm	CTT2020	19 G x 15 cm
18 G ●	TT186	18 G x 6 cm	–	–
	TT1811	18 G x 11 cm	CTT1811	17 G x 6 cm
	TT1815	18 G x 15 cm	CTT1815	17 G x 10 cm
	TT1820	18 G x 20 cm	CTT1820	17 G x 15 cm
16 G ●	TT166	16 G x 6 cm	–	–
	TT1611	16 G x 11 cm	CTT1611	15 G x 6 cm
	TT1615	16 G x 15 cm	CTT1615	15 G x 10 cm
	TT1620	16 G x 20 cm	CTT1620	15 G x 15 cm
14 G ○	TT146	14 G x 6 cm	–	–
	TT1411	14 G x 11 cm	CTT1411	13.5 G x 6 cm
	TT1415	14 G x 15 cm	CTT1415	13.5 G x 10 cm
	TT1420	14 G x 20 cm	CTT1420	13.5 G x 15 cm

For single use only. Five devices per case.



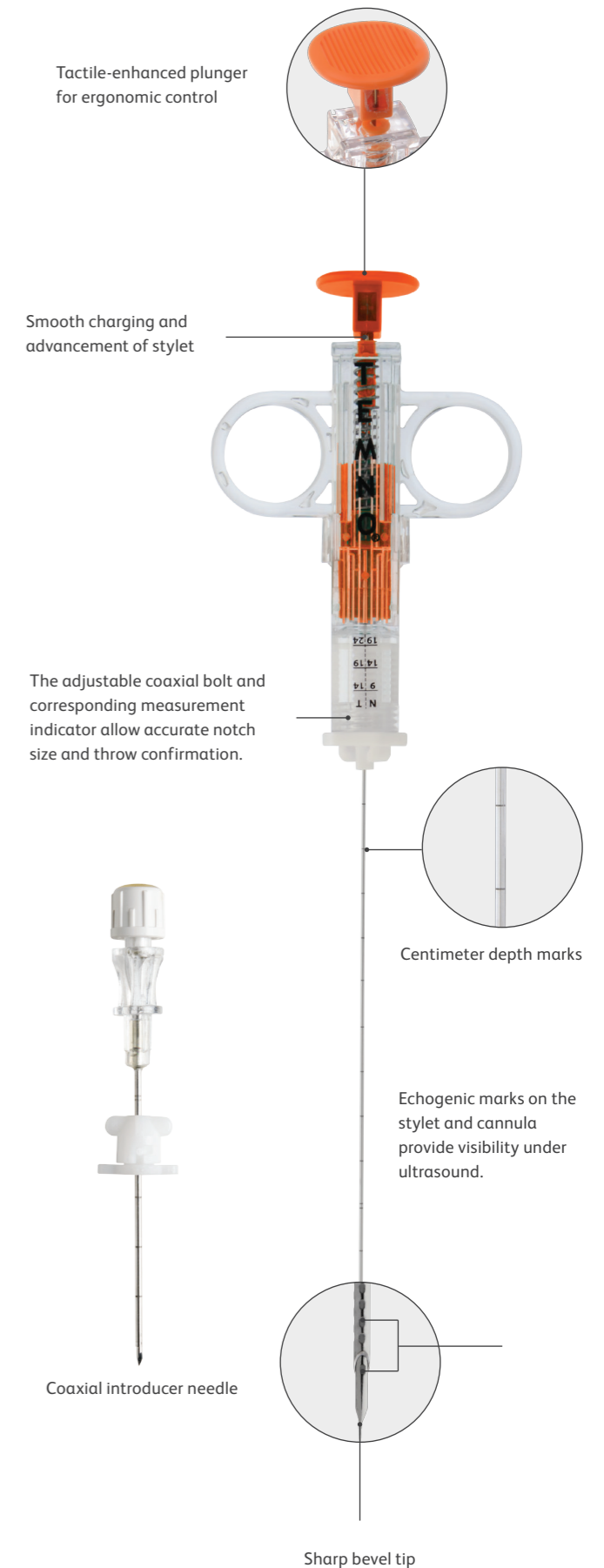
ACT biopsy device

The ACT biopsy device combines the quality and reliability of the Temno brand with innovative technology. The device lets you manipulate the sample notch size from 9 to 19 mm for precise control with small lesions and peace of mind in vascular areas. It includes a coaxial introducer needle.

- Compact, lightweight design passes through CT gantry with ease.
- One-handed operation allows convenient manipulation of the ultrasound transducer.
- Ability to reposition stylet prior to sample capture for greater confidence.
- Tissue settles in notch before firing for a larger core.

ACT	Cat. no.	Biopsy needle size	Introducer needle size
22 G ○	ACT2211	22 G x 11 cm	20 G x 6 cm
	ACT2215	22 G x 15 cm	20 G x 10 cm
20 G ●	ACT2011	20 G x 11 cm	19 G x 6 cm
	ACT2015	20 G x 15 cm	19 G x 10 cm
	ACT2020	20 G x 20 cm	19 G x 15 cm
18 G ●	ACT1811	18 G x 11 cm	17 G x 6 cm
	ACT1815	18 G x 15 cm	17 G x 10 cm
	ACT1820	18 G x 20 cm	17 G x 15 cm
	ACT1415	14 G x 15 cm	13.5 G x 10 cm

For single use only. Five devices per case.

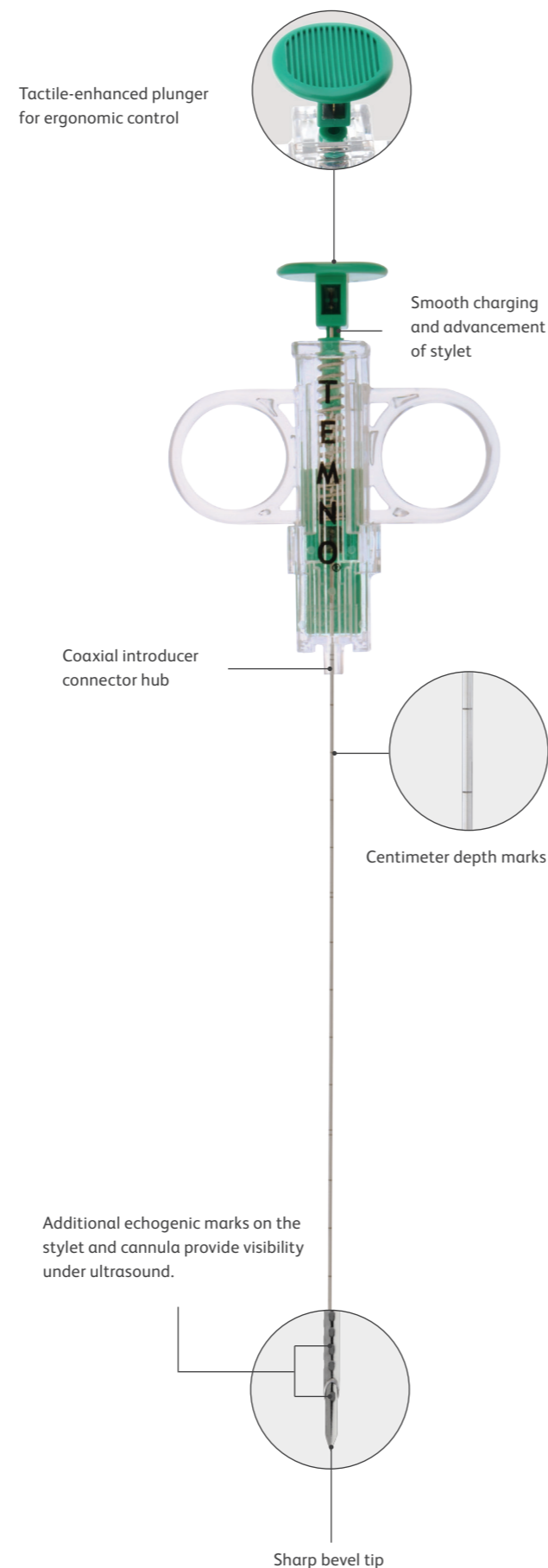


Temno biopsy device

The original Temno device is easy to use, offering simplicity, reliability and precision you can count on. It features a 20 mm sample notch and a lightweight, compact design. Available with or without a coaxial introducer needle.

Original Temno	Biopsy needle cat. no.	Biopsy needle size	Biopsy needle with introducer cat. no.	Introducer needle size
22 G ○	T226	22 G x 6 cm	–	–
	T229	22 G x 9 cm	–	–
	T2215	22 G x 15 cm	CT2215	20 G x 10 cm
	–	–	CT2220	20 G x 15 cm
20 G ●	T206	20 G x 6 cm	–	–
	T209	20 G x 9 cm	–	–
	T2011	20 G x 11cm	CT2011	19 G x 6 cm
	T2015	20 G x 15cm	CT2015	19 G x 10 cm
	T2020	20 G x 20 cm	CT2020	19 G x 15 cm
18 G ●	T186	18 G x 6 cm	–	–
	T189	18 G x 9 cm	–	–
	T1811	18 G x 11 cm	CT1811	17 G x 6 cm
	T1815	18 G x 15 cm	CT1815	17 G x 10 cm
	T1820	18 G x 20 cm	CT1820	17 G x 15 cm
16 G ●	T166	16 G x 6 cm	–	–
	T169	16 G x 9 cm	–	–
	T1611	16 G x 11 cm	CT1611	15 G x 6 cm
	T1615	16 G x 15 cm	CT1615	15 G x 10 cm
	T1620	16 G x 20 cm	CT1620	15 G x 15 cm
14 G ○	T146	14 G x 6 cm	–	–
	T149	14 G x 9 cm	–	–
	T1411	14 G x 11 cm	CT1411	13.5 G x 6 cm
	T1415	14 G x 15 cm	CT1415	13.5 G x 10 cm
	T1420	14 G x 20 cm	CT1420	13.5 G x 15 cm

For single use only. Five devices per case.



Universal coaxial introducer needles

Our thin-wall introducer needles provide a clear path that makes it easier to perform multiple needle biopsies at one site. Use them with any Achieve or Temno core needle and with fine needle aspiration (FNA) needles.

Coaxial introducer needles	Cat. no.	Introducer needle size	Biopsy needle size	Biopsy needle cat. no. ending*
20 G	PP2010	20 G x 10 cm	22 G x 15 cm	2215
	PP2015	20 G x 15 cm	22 G x 20 cm	2220
	PP206	20 G x 6 cm	22 G x 11 cm	2211
19 G	PP196	19 G x 6 cm	20 G x 11 cm	2011
	PP1910	19 G x 10 cm	20 G x 15 cm	2015
	PP1915	19 G x 15 cm	20 G x 20 cm	2020
17 G	PP176	17 G x 6 cm	18 G x 11 cm	1811
	PP1710	17 G x 10 cm	18 G x 15 cm	1815
	PP1715	17 G x 15 cm	18 G x 20 cm	1820
15 G	PP156	15 G x 6 cm	16 G x 11 cm	1611
	PP1510A	15 G x 10 cm	16 G x 15 cm	1615
	PP1515A	15 G x 15 cm	16 G x 20 cm	1620
14 G	PP1356	13.5 G x 6 cm	14 G x 11 cm	1411
	PP13510	13.5 G x 10 cm	14 G x 15 cm	1415

For single use only. Ten devices per case.

* Order biopsy needle with cat. no. ending as specified. For example, introducer needle PP1910 fits Achieve needle A2015, standard Temno needle T2015 and Chiba FNA CHI2015.



Coaxial introducer needles feature:

- The positive-locking skin stop controls forward migration.
- The trocar-point stylet penetrates tissue with ease for a smooth, straight insertion.
- The blunt-ended cannula allows multiple sampling from one percutaneous puncture with minimal damage to surrounding tissue.
- The centimeter markings and echogenic tip facilitate ultrasound-guided procedures.
- A clear luer lock hub provides visibility.
- The introducer needle is just one gauge size larger than its compatible core tissue biopsy needle (except a 22 G needle uses a 20 G introducer, and a 14 G needle uses a 13.5 G introducer).
- A 10 G coaxial introducer is only available with the 12 G Pink Achieve needle and is not sold separately. Features include a wing grip, a trocar stylet, a bevel cannula, centimeter depth marks and a luer lock hub.



FNA needles

Designed for aspiration of soft tissue masses, FNA needles are available with a Chiba or Franseen tip for optimum versatility. FNA needles are also available in sets with the universal coaxial introducer needle. The coaxial introducer needle facilitates multiple sampling and is compatible with Temno standard biopsy devices for histology backup. Coaxial sets include two aspiration needles (either Chiba or Franseen) and one universal coaxial introducer needle.

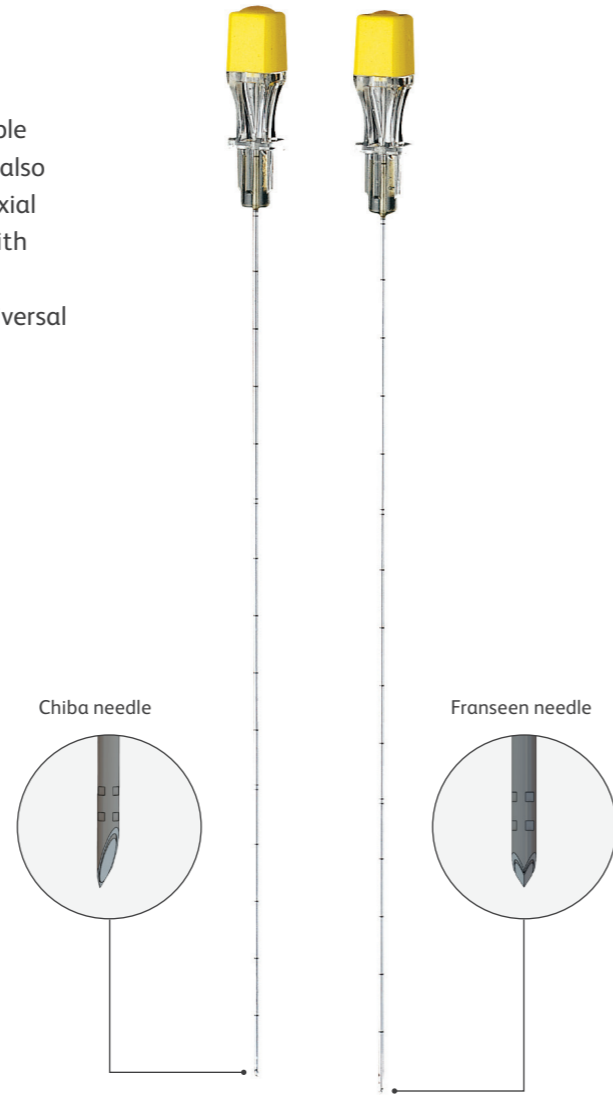
Coaxial sets with Chiba needle			
Needle	Cat. no.	Biopsy needle size	Introducer needle size
22 G	CCH2210	22 G x 10 cm	20 G x 5 cm
	CCH2215	22 G x 15 cm	20 G x 10 cm
	CCH2220	22 G x 20 cm	20 G x 15 cm
20 G	CCH2015	20 G x 15 cm	19 G x 10 cm
	CCH2020	20 G x 20 cm	19 G x 15 cm

Coaxial sets with Franseen needle			
Needle	Cat. no.	Biopsy needle size	Introducer needle size
22 G	CFR2210	22 G x 10 cm	20 G x 5 cm
	CFR2215	22 G x 15 cm	20 G x 10 cm
	CFR2220	22 G x 20 cm	20 G x 15 cm
20 G	CFR2015	20 G x 15 cm	19 G x 10 cm
	CFR2020	20 G x 20 cm	19 G x 15 cm

For single use only. Five devices per case.

Chiba needles only			Franseen needles only	
Needle	Cat. no.	Size	Cat. no.	Size
22 G	CHI226	22 G x 6 cm	-	-
	CHI229	22 G x 9 cm	-	-
	CHI2210	22 G x 10 cm	FRA2210	22 G x 10 cm
	CHI2215	22 G x 15 cm	FRA2215	22 G x 15 cm
	CHI2220	22 G x 20 cm	FRA2220	22 G x 20 cm
20 G	CHI205	20 G x 5 cm	-	-
	CHI2010	20 G x 10 cm	FRA2010	20 G x 10 cm
	CHI2015	20 G x 15 cm	FRA2015	20 G x 15 cm
	CHI2020	20 G x 20 cm	FRA2020	20 G x 20 cm
18 G	CHI1815	18 G x 15 cm	FRA1815	18 G x 15 cm
	CHI1820	18 G x 20 cm	FRA1820	18 G x 20 cm

For single use only. Ten devices per case.



Features include:

- Chiba needle bevel tip to obtain an aspirate for cytology
- Franseen needle crown-point tip for samples in fibrous lesions
- Centimeter depth markings that aid in accurate placement
- Clear luer lock hub for good visibility during aspirate procedures
- Positive-locking skin stop for controlling forward migration
- Echogenic tip to enhance ultrasound visualization

Jamshidi Menghini biopsy device

The Jamshidi Menghini soft tissue biopsy needle for histological and cytological biopsy samples is designed to achieve maximum results for your liver biopsies. The product consists of a 10mL syringe attached to the biopsy needle. Available in a wide range of sizes.

Jamshidi Menghini biopsy needles only		
	Cat. no.	Biopsy needle size
17 G	SN7017X	17 G x 70 mm
	SN1017X	17 G x 100 mm
16 G	SN7016X	16 G x 70 mm
	SN1016X	16 G x 100 mm
15 G	SN7015X	15 G x 70 mm
	SN1015X	15 G x 100 mm

For single use only.



Tru-Cut biopsy needles

The Tru-Cut biopsy needle is designed for manual capture of high-quality tissue samples with minimal trauma to the patient.

Features include:

- 20 mm specimen notch
- Scalpel-sharp, surgical-steel cutting edge that retrieves cleanly cut, high-quality specimens
- Removable stylet for multiple sampling capability
- Thin-wall needle to yield larger core
- Centimeter depth markings to assist in needle placement

	Cat. no.	Size
18 G	2N2711X	18 G x 7.6 cm
	2N2712X	18 G x 11.4 cm
	2N2713X	18 G x 15.2 cm
14 G	2N2700X	14 G x 7.6 cm
	2N2702X	14 G x 11.4 cm
	2N2704X	14 G x 15.2 cm

For single use only.



Soft tissue biopsy devices quick reference

	Cat. no. prefix	Sample notch (mm)	Throw (mm)	Coaxial introducer	Echogenic markings		Tip shape		
					Stylet	Cannula	Stylet	Cannula	
Automated	Achieve needle	A	20	25	Compatible	Yes	Yes	Bevel	Bevel
	Achieve coaxial system	CA	20	25	Included	Yes	Yes	Bevel	Bevel
	Pink Achieve needle	BA	20	25	Compatible	Yes	Yes	Bevel	Bevel
	Pink Achieve coaxial system	BCA	20	25	Included	Yes	Yes	Bevel	Bevel
Semiautomated	Temno Evolution needle	TT	10 or 20	12 or 21	Compatible	Yes	Yes	Four-sided bevel	Bevel
	Temno Evolution coaxial system	CTT	10 or 20	12 or 21	Included	Yes	Yes	Four-sided bevel	Bevel
	ACT device	ACT	9–19	14–24	Included	Yes	Yes	Bevel	Bevel
	Temno needle	T	20	22	Compatible	Yes	Yes	Bevel	Bevel
	Temno coaxial needle	CT	20	22	Included	Yes	Yes	Bevel	Bevel
Introducer	Universal coaxial introducer needle	PP	N/A	N/A	N/A	No	Yes	Trocar	Blunt

	Gauge									Length (cm)							
	22	20	19	18	17	16	15	14	12	5	6	9	10	11	15	20	25
Automated	Achieve needle	•		•		•		•			•	•		•	•	•	
	Achieve coaxial system	•		•		•		•						•	•	•	
	Pink Achieve needle								•	•		•		•	•		
	Pink Achieve coaxial system								•	•				•	•		
Semiautomated	Temno Evolution needle	•		•		•		•						•	•	•	
	Temno Evolution coaxial system	•		•		•		•			•			•	•	•	
	ACT device	•	•		•				•					•	•	•	
	Temno needle	•	•		•		•		•		•	•		•	•	•	
Introducer	Temno coaxial needle	•	•		•		•		•					•	•	•	
	Universal coaxial introducer needle		•	•		•		•	13.5		•		•		•		

Not all lengths are available for every gauge size. Please check the individual ordering information charts in this brochure for details before ordering.

Soft tissue biopsy devices quick reference

	Cat. no. prefix	Sample notch (mm)	Throw (mm)	Coaxial introducer	Echogenic markings		Tip shape		
					Stylet	Cannula	Stylet	Cannula	
FNA needles	Chiba FNA needle	CHI	N/A	N/A	Compatible	No	Yes	Bevel	Bevel
	Chiba coaxial set	CCH	N/A	N/A	Included	No	Yes	Bevel	Bevel
	Franseen FNA needle	FRA	N/A	N/A	Compatible	No	Yes	Trocar	Crown
	Franseen coaxial set	CFR	N/A	N/A	Included	No	Yes	Trocar	Crown
Manual	Jamshidi Menghini needle	SN	N/A	N/A	No	N/A	No	N/A	Bevel
	Tru-Cut needle	2N2	20	23	No	No	No	Bevel	Bevel

	Gauge									Length (cm)							
	22	20	19	18	17	16	15	14	12	5	6	9	10	11	15	20	25
FNA needles	Chiba FNA needle	•	•		•						•	•	•		•	•	
	Chiba coaxial set	•	•										•		•	•	
	Franseen FNA needle	•	•		•								•		•	•	
	Franseen coaxial set	•	•										•		•	•	
Manual	Jamshidi Menghini needle					•	•	•			70 mm		100 mm				
	Tru-Cut needle				•				•		7.6 cm			11.4 cm	15.2 cm		

Not all lengths are available for every gauge size. Please check the individual ordering information charts in this brochure for details before ordering.



Customer Services and Distribution Contact Details

United Kingdom

Tel: +44 (0) 1256365458

Email: uksales@iskushealth.com

Ireland

ROI Tel: +353 1 404 8383


NI Tel: 0845 850 8600


Email: info@iskushealth.com

www.iskushealth.com

Refer to the complete instructions for use accompanying the devices, or follow the instructions on the product labeling.

Medical devices class sterile IIa, according to Medical devices Council Directive 93/42/EEC, CE marked by TÜV SÜD Product Service GmbH (0123).

 CareFusion
75 North Fairway Drive
Vernon Hills, IL 60061 USA

 CareFusion France 309 S.A.S.
8 bis rue de la Renaissance
44110 Châteaubriant France

European headquarters:
BD, Terre-Bonne-Park - A4
Route de Crassier 17
1262 Eysins, Switzerland
Tel: +41(0) 21 556 30 00

bd.com

Filter Straw is a trademark of B. Braun Medical Inc.
© 2017 BD. BD, formally known as CareFusion and the BD Logo and all other trademarks are property of Becton, Dickinson and Company.
CF03163, issue 1 Mar 2017 (IS4426 (0916/1000))

