



# BIOPSY. ACHIEVED.

# Achieve®

Programmable Automatic Biopsy System

# Achieve®

Programmable Automatic Biopsy System

## SPRING-LOADED ACTION FOR FAST, ACCURATE PENETRATION

The Achieve® programmable automatic biopsy system is the one solution for your soft tissue biopsy needs. This lightweight, automated system offers spring-loaded action for fast, accurate penetration and gives you the precise control and quality sampling capability you need when working with calcified or fibrous lesions.



## PRECISION

### Three programmable firing modes

- **Automatic mode:** releases cannula and stylet in rapid sequence and captures tissue sample with the push of a button
- **Delay mode:** releases stylet and allows time for tissue to settle in notch; user verifies and documents stylet position, repositions if necessary and activates the cutting cannula
- **Zero-Throw mode:** This mode offers precision and reduces the threat of damage to deeper tissue with no forward throw of the needle.

**Echogenic markings** on both stylet tip and cannula help confirm the placement of the sample notch for precise ultrasound positioning  
20mm sample notch and thin-wall cannula for larger core

## CONVENIENCE

**35% lighter** in weight than other automatic devices, making the system ideal for CT and ultrasound-guided procedures

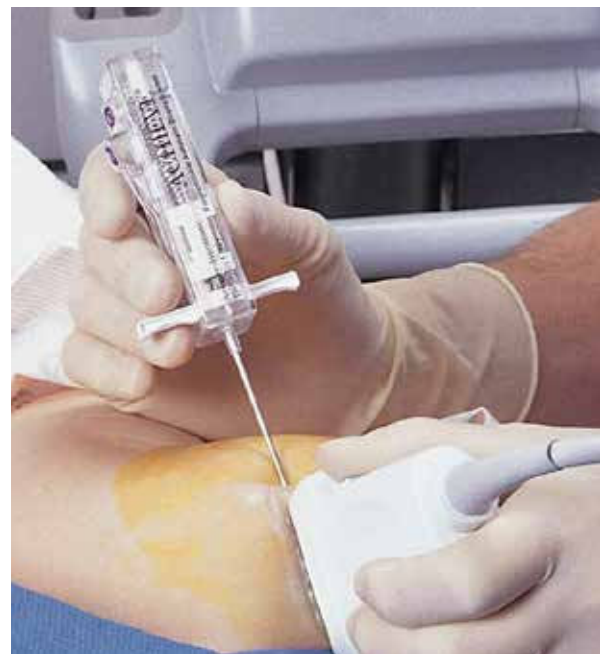
**One-handed design** simplifies loading and operation while allowing for convenient manipulation of ultrasound transducer

**Available with coaxial introducer** for multiple sampling from one percutaneous puncture with minimal damage to surrounding tissue

## ENHANCED DESIGN

**Less force** is required to charge the Achieve® needle, ensuring smooth, one-handed operation

**Reliable sample retrieval** reduces risk of sample loss



*The Achieve® needle's lightweight, one-handed design allows for convenient handling of ultrasound transducer.*



# Achieve®

## Programmable Automatic Biopsy System

The Achieve® biopsy device is commonly used for the following biopsy procedures:

- Breast
- Kidney
- Liver
- Prostate



### ACHIEVE® COAXIAL BIOPSY SYSTEMS

Needle Gauge	Catalog Number	Needle Size	Introduce Needle Size	Usable Length
20G	CA2011	20G x 11cm	19G x 6cm	5cm
	CA2015	20G x 15cm	19G x 10cm	9cm
	CA2020	20G x 20cm	19G x 15cm	14cm
18G	CA1811	18G x 11cm	17G x 6cm	5cm
	CA1815	18G x 15cm	17G x 10cm	9cm
	CA1820	18G x 20cm	17G x 15cm	14cm
16G	CA1611	16G x 11cm	15G x 6cm	5cm
	CA1615	16G x 15cm	15G x 10cm	9cm
	CA1620	16G x 20cm	15G x 15cm	14cm
14G	CA1411	14G x 11cm	13.5G x 6cm	5cm
	CA1415	14G x 15cm	13.5G x 10cm	9cm
	CA1420	14G x 20cm	13.5G x 15cm	14cm

### ACHIEVE® BIOPSY NEEDLES ONLY

Needle Gauge	Catalog Number	Needle Size	Needle Gauge	Catalog Number	Needle Size
20G	A206	20G x 6cm	16G	A166	16G x 6cm
	A209	20G x 9cm		A169	16G x 9cm
	A2011	20G x 11cm		A1611	16G x 11cm
	A2015	20G x 15cm		A1615	16G x 15cm
	A2020	20G x 20cm		A1620	16G x 20cm
18G	A186	18G x 6cm	14G	A146	14G x 6cm
	A189	18G x 9cm		A149	14G x 9cm
	A1811	18G x 11cm		A1411	14G x 11cm
	A1815	18G x 15cm		A1415	14G x 15cm
	A1820	18G x 20cm		A1420	A1420

For single patient use only. Five devices per case.

### ACHIEVE® BREAST BIOPSY

Needle Gauge	Catalog Number	Description	Biopsy Needle size	Introducer Needle size	Usable length
14 G	BA149	Achieve biopsy needle only	14 G x 9 cm	N/A	N/A
	BA1411	Achieve biopsy needle only	14 G x 11 cm	N/A	N/A
	BCA1411	Achieve coaxial biopsy system	14 G x 11 cm	13.5 G x 6 cm	5 cm
12 G	BA129	Achieve biopsy needle only	12 G x 9 cm	N/A	N/A
	BA1211	Achieve biopsy needle only	12 G x 11 cm	N/A	N/A
	BA1215	Achieve biopsy needle only	12 G x 15 cm	N/A	N/A
	BCA1211	Achieve coaxial biopsy system	12 G x 11 cm	10 G x 6 cm	N/A
	BCA1215	Achieve coaxial biopsy system	12 G x 15 cm	10 G x 10 cm	N/A



Understand. Innovate. Deliver.™

Merit Medical Systems, Inc.  
1600 West Merit Parkway  
South Jordan, Utah 84095  
1.801.253.1600  
1.800.35.MERIT

Merit Medical Europe, Middle East, & Africa (EMEA)  
Amerikalaan 42, 6199 AE Maastricht-Airport  
The Netherlands  
+31 43 358 82 22

merit.com



#### Ireland Distribution

ROI Tel: +353 1 404 8383

NI Tel: 0845 850 8600

Email: info@iskushealth.com

www.iskushealth.com