

# Drainage instructions

## PleurX® catheter system

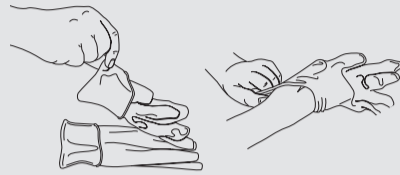
These instructions are to be used only as a supplementary reference. Read the *Instructions for Use* that come with the drainage kits and watch the *drainage video* for more detailed instructions.

### Getting started

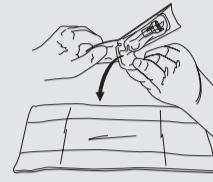
Get all drainage supplies ready and thoroughly wash your hands.



1 Open all packaging. Unfold blue wrapping. Place bottle near wrapping and lay access tip on blue wrapping.



2 Pick up each glove by the wrist and put both of them on.

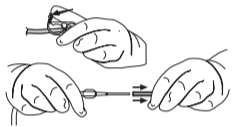


3 Open pouch containing valve cap and let it fall onto sterile blue wrapping.

4 Tear open alcohol pads. Lay open pouches on blue wrapping a short distance from sterile items.

### Connecting the drainage bottle

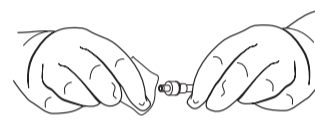
Be sure to keep the end of the catheter and access tip clean.



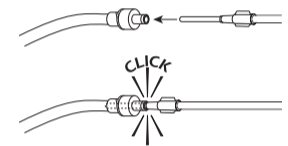
5 Squeeze clamp on drainage line completely closed and remove cover from access tip.



6 Take valve cap off catheter.



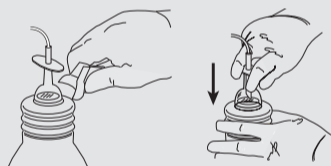
7 Clean around valve opening with first alcohol pad.



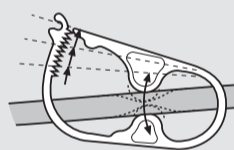
8 Insert access tip into catheter valve.

### Draining fluid

Do not drain more than 1,000mL from your chest or 2,000mL from your abdomen at any one time.



9 Remove support clip from top of drainage bottle and push down "T" plunger.

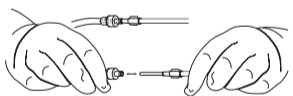


10 Release clamp on drainage line to begin draining.

11 Squeeze clamp on drainage line completely closed when finished draining.

### Final steps and disposal

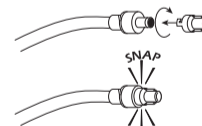
If you have any questions or concerns, contact your doctor or nurse.



12 Pull access tip out of valve; set drainage line down.



13 Clean around valve opening with second alcohol pad.



14 Place new cap on catheter valve and twist it until it snaps into its locked position.



15 Clean around catheter site with third alcohol pad.



16 Place foam catheter pad around catheter and wind catheter on top of pad. Cover catheter with gauze pads.



17 Place self-adhesive dressing over gauze pads and remove plastic covering.



18 Push down "T" plunger and move plunger in a circular motion to further puncture the foil seal so fluid can be poured out.



19 Remove flexible cap and drainage line from bottle.

20 Empty bottle into toilet. Place bottle in a plastic bag, seal tightly and discard.

For further information or to learn more about how CareFusion can assist in your efforts to bring this valuable treatment option to more patients, please email [IS-Pleurx@carefusion.com](mailto:IS-Pleurx@carefusion.com), or visit [carefusion.co.uk/pleurx](http://carefusion.co.uk/pleurx)

