

# Medical & Surgical Personal Protective Equipment



# DISPOSABLE SURGICAL GOWNS

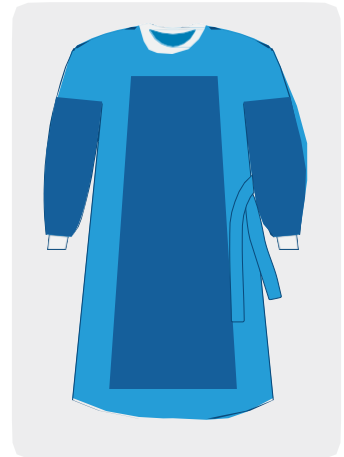
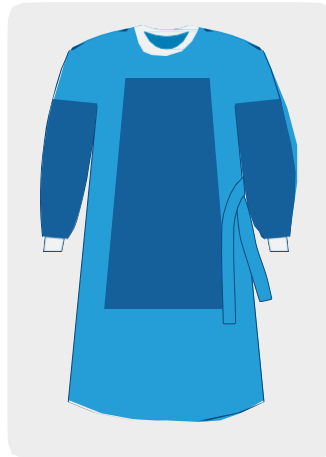


LEVEL 1

LEVEL 2

LEVEL 2

LEVEL 2



Latex Free



Single Use

Our Level 1, 2 and 3 gowns are intended to be used in situations where minimal, low, and moderate fluid barrier protection is needed. Level 4 gowns are prepared for the highest fluid and microbial barrier protection to protect the user against long, fluid-intensive procedures and reduce the risk of potential blood-borne pathogens.

## AAMI PB70 GUIDELINES

LEVEL	TEST METHOD	TEST DEFINITION	REQUIREMENT	EXPECTED BARRIER EFFECTIVENESS	ANTICIPATED FLUID EXPOSURE
<b>AAMI LEVEL 1</b>	AATCC 42 Impact penetration	Measures the ability of a material to resist water penetration under spray impact	Water impact $\leq 4.5$ g	Minimal water resistance (some resistance to water spray)	<b>MINIMAL FLUID LEVELS</b>
<b>AAMI LEVEL 2</b>	AATCC 42 Impact penetration AATCC 127 Hydrostatic Pressure	Measures the ability of a material to resist water penetration under spray impact Measures the ability of a material to resist water penetration under constant contact with increasing pressure	Spray impact $\leq 1.0$ g Hydrostatic pressure $\geq 20$ cm	Low water resistance (resistant to water spray and some resistance to water penetration under constant contact with increasing pressure)	<b>LOW FLUID LEVELS</b>
<b>AAMI LEVEL 3</b>	AATCC 42 Impact penetration AATCC 127 Hydrostatic Pressure	Measures the ability of a material to resist water penetration under spray impact Measures the ability of a material to resist water penetration under constant contact with increasing pressure	Spray impact $\leq 1.0$ g Hydrostatic pressure $\geq 20$ cm	Moderate water resistance (resistant to water spray and some resistance to water penetration under constant contact with increasing pressure)	<b>MODERATE FLUID LEVELS</b>
<b>AAMI LEVEL 4</b>	ASTM F1671 Viral Penetration Test	Measures the resistance to penetration by blood borne pathogens using a surrogate microbe under conditions of continuous liquid contact.	Pass	Blood and viral penetration resistance (2 psi)	<b>HIGH FLUID LEVELS</b>

The Association for the Advancement of Medical Instrumentation (AAMI) standards are designed to help medical-device companies meet global standards for the safe use of medical devices. ANSI/AAMI PB70:2012

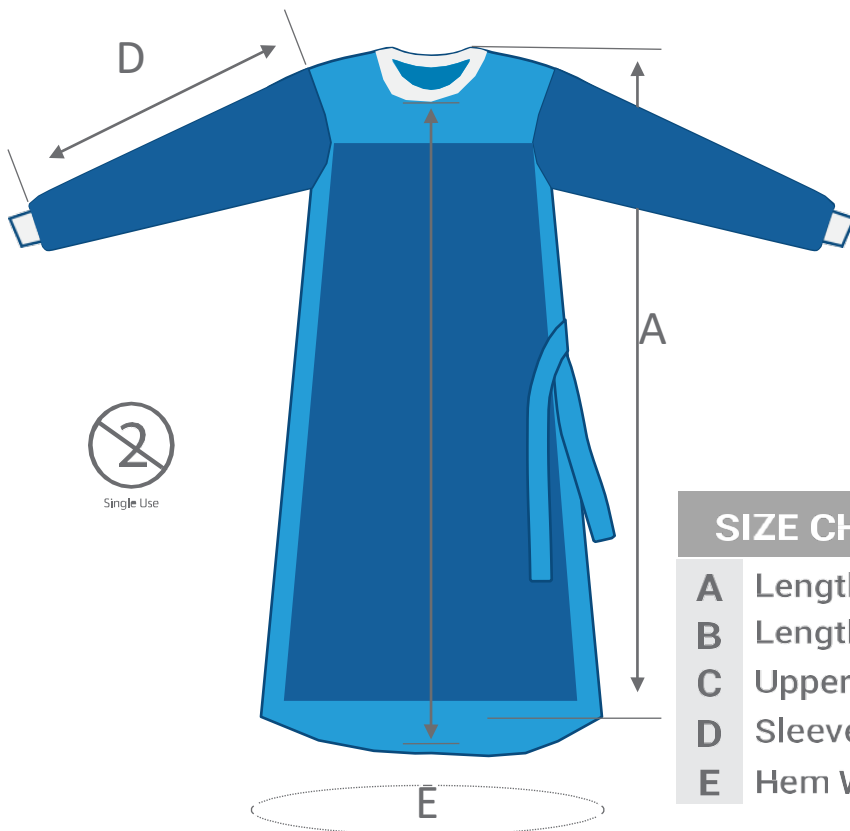
# Highest Fluid PROTECTION

## Fully Reinforced Surgical Gown

LEVEL 4

Level 4 gowns are prepared for the highest fluid and microbial barrier protection to protect the user against long, fluid-intensive procedures and reduce the risk of potential blood-borne pathogens.

- Light weight material and soft feel
- High strength yet durable
- Permeates air and water vapor, but obstructs water-based liquids



- 45 gsm Non-woven SMMS fabric
- Reinforced Impervious
- Strong adhesive Velcro on the back neckline
- Blue Color
- Sterile
- 2 hand towels

SIZE CHART (cm)		S	M	L	XL	XXL
A	Length (Shoulder to Hem)	10	115	12	135	140
B	Length (Collar to Hem)	103	105	115	125	130
C	Upper Arm	29	29	29	32	32
D	Sleeve Length	56	58	60	62	64
E	Hem Width	140	145	150	150	15

(+ - 3cm)



### PACKING

Each Carton Weight: 9 KG  
Carton Box Dimensions: 40 x 60 x 40 cm

PRODUCT CODE	SIZE	PACK FACTOR
ISK9508	Large	45
ISK9509	Extra Large	45
ISK9512	Extra Large Long	45

# DISPOSABLE SCRUB SUIT

## KEY FEATURES

- Set includes a shirt and trouser
- Made from an opaque SMS material
- Shirt with a bell-shaped design for a perfect fit
- V-neck shirt
- Convenient pocket on the shirt
- Adjustable waist ties on the trouser.
- Blue colour

SIZE CHART (cm)		M	L	XL
SCRUB TUNIC	A	75	76	77
	B	18	19	19
	C	29	30	31
	D	19	20	21
	E	55	57	59
SCRUB TROUSER	A	50	52	54
	B	35	37	39
	C	106	107	108
	D	82	84	85
	E	22	24	25

PRODUCT CODE	SIZE	PACK FACTOR
90506-IH	SMALL	50
90507-IH	MEDIUM	50
90508-IH	LARGE	50
90509-IH	X LARGE	50
90510-IH	XX LARGE	50

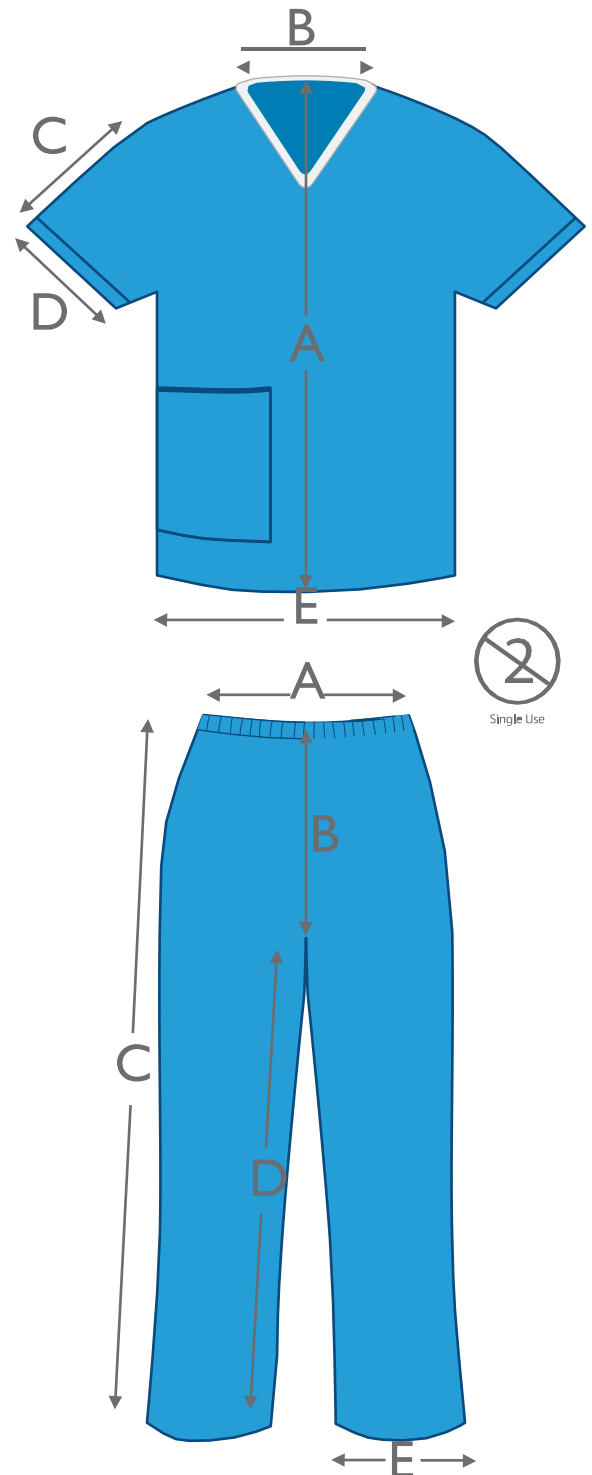
(+ - 3 cm)



## PACKING

Each Carton Weight: 9 KG

Carton Box Dimensions: 40 x 60 x 40 cm



# DISPOSABLE WARM-UP JACKET



## KEY FEATURES

- Long sleeves
- 40GSM SMS Material
- A gentle knit collar
- Knitted soft cuffs
- Front snap closures

Size Chart CM	M	L	XL
Chest	63	68	72
Length	74	81	87

(+ - 3 cm)



Single Use

PRODUCT CODE	NHS PC	SIZE	PACK FACTOR
WG0084MN-IH	BWK1688	Medium	50
WG0084LN-IH	BWK1689	Large	50
WG0084XLN-IH	BWK1690	Extra Large	50



## PACKING

Each Carton Weight: 8 KG

Carton Box Dimensions: 40 x 60 x 40 cm

# SURGICAL HEADWEAR

## MOB CAPS

### KEYFEATURES

- Highbreathability
- Spunbond Nonwoven – 25GSM with Polypropylene
- Anti-Static
- Lightweight with Elastic Edge
- White or Blue

## SURGICAL CAPS

### KEYFEATURES

- Highbreathability
- Lightweight & Comfortable
- Spunbond Nonwoven – 40GSM with Polypropylene
- Elastic Edge
- Tie Back



Single Use



**3244-IH**



Single Use



**4359-IH**



**3274-IH**

PRODUCT CODE	SIZE	Colour	PACK FACTOR
3274-IH	Large	Blue	1,500
3244-IH	Regular	White	2,000
4359-IH	Universal	Blue	200

# DISPOSABLE SHOE COVERS

## KEY FEATURES

- Spunbond Nonwoven 25GSM
- Polypropylene
- Lightweight
- Elastic edge
- Universal Size



4850-IH



## KEY FEATURES

- Polyethylene
- Single Elastic
- Lightweight
- Double Elastic



4860-IH



Single Use

PRODUCT CODE	SIZE	Material	PACK FACTOR
4850-IH	Universal	Polypropylene	1,500
4860-IH	Universal	Polyethylene	1,500



## PACKING

Each Bag Contains: 100pcs  
Each Carton Box Contains: 1600 pcs  
Each Carton Weight: 5.8KG  
Carton Box Dimensions: 40 x 60 x 40 cm



**IRELAND**

**Iskus Helath Ltd**

4045 Kingswood Drive, Citywest  
Business Campus,  
Dublin 24,  
D24 V06K,  
Ireland  
Phone : +353 (0) 1 428 7895 - 96  
E-mail: [info@iskushealth.com](mailto:info@iskushealth.com)

**UNITED KINGDOM**

**Iskus Health UK Ltd**

Unit 5, Swallowfield Way,  
Hayes, Middlesex,  
London,  
UB3 1DQ,  
United Kingdom  
Phone : +44 (0) 208 869 6509  
E-mail: [uksales@iskushealth.com](mailto:uksales@iskushealth.com)

**[www.iskushealth.com](http://www.iskushealth.com)**